

# Favoured Shades Sampler



A few days after the 1st of April and sending Part One to all those who had enrolled for this new sampler project, I had to Email them to apologise for a mistake I had made when charting Area Three - the Satin Stitch area. That error has since been rectified.

Also, I have received a few queries and concerns - and so below are answers to these - just in case you have been wondering about the same thing.

## Is there any withdrawn work?

Yes - there is. Four threads need to be withdrawn for the Interlaced Hemstitch, and too, four threads for the Zigzag Hemstitch, and there is an area of Filet / Needleweaving towards the bottom of the sampler.

## Thread Colour suggestions - not all computers show colours the same, it's difficult to read the colour numbers suggested and sometimes bundles of threads show more than the (7) required in the sampler.

Some of you were struggling with what colours to chose and so I sent images of some possibilities. However, at that time I did not add the colour numbers or overdyed thread colour names.

In reply to the concern above, I have attached the thread images again & added their colour numbers.

As for more than (7) colours shown in one group, you choose just (7) of your favourite shades from this group.

If there is an overdyed thread lying between several skeins of solid coloured threads, the options are that you can choose solid thread colours from the different family of colour ranges / shading depths & tones from one side or the other side from the overdyed or take colours from both sides.

The decision for you to make is for you to choose what is pleasing to your eye.

## What do you mean about not stitching the solid lines?

Between Area One and Area Three there are two solid black lines - and out to the right, Area 2 is written.

The solid black lines are only an indication that the stitch (Cable Stitch) is to be worked on the five threads between the solid black lines - the lines themselves are not to be worked.

Same applies for the solid black lines of Area Three and Area Four. Don't work these solid lines - just the decorative stitches on the fabric threads that lie between these solid lines.

And - a note from me: Area 2 - the Cable Stitch

It is up to you whether you leave only one thread between Row 1 and Row 2 (as per instructions and chart)

or whether you leave two threads as per the stitch diagram.

Leaving two threads will not have an adverse effect on the length of your sampler.

I have begun stitching this sampler again for my guest bedroom. I have to confess that I loved the choice of colours when they were in the hanks/skeins - but not so keen on them stitched. However I'm going to continue with them.

But - as for yourselves - do not be afraid to change a thread colour if you are disappointed with a shade when it has been stitched.

Often one or two strands of a colour looks quite different to the colour when in a skein or hank.

My sincere apologies for causing you any concern, confusion and frustration. And your need for reverse stitching if this has been your experience. I truly am sorry.

Your friend, *Sherelyn*

# Favoured Shades continued .....

Sunday, 6 April 2014

Progress ~ Part 1

How is your sampler progressing? I hope you had fun choosing your favourite thread colour and shadings of it.

I have begun stitching this sampler again for my guest bedroom. I have to confess that I loved the choice of colours when they were in the hanks/skeins – but not so keen on them stitched. However I'm going to continue with them, as they are the room décor colours.

But – as for yourselves – do not be afraid to change a thread colour if you are disappointed with a shade when it has been stitched.

Often one or two strands of a colour looks quite different to the colour when in a skein or hank. Also, it is good to *test* the thread colours to see how they will look by stitching about six stitches and two rows of each colour on the edge of your fabric.



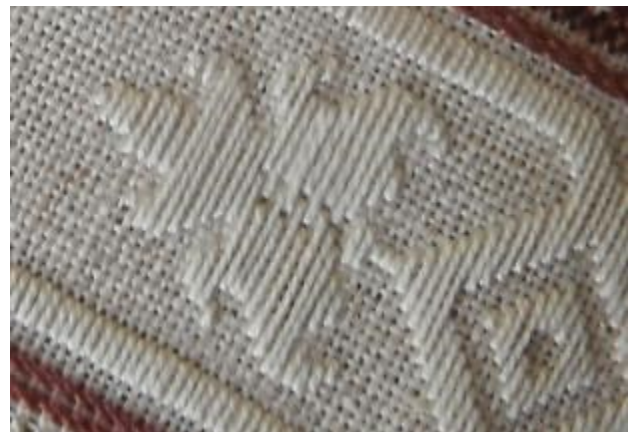
**Area One:** I did make changes to this band by choosing different shades of colour. Whereas I chose my second darkest colour in my original sampler, chose my darkest dark colour this time for the band edges & centres and then stitched the two motifs at each end of the band in different shades to see which were most pleasing. As for the partial flower petals, I decided to use my second lightest colour rather my lightest colour and chose the shade that worked best with this one for the motifs and petals of the larger flowers.

**Area Two:** It is up to you whether you leave only one thread between Row 1 and Row 2 of your Cable Stitch (*as per instructions and chart*) or whether you leave two threads as per the stitch diagram. Leaving two threads will not have an adverse effect on the length of your sampler. I decided not to leave any threads between - but on reflection, I do think this area would look better with a thread or two between.

**Area Three:** Below is a close up of the 'arrow head' of my original sampler and one of it on my latest sampler. You will also notice another difference. This is due to the fabric count of my linen. My original sampler was worked on 28 count *Cashel Linen*. My latest sampler is worked on 35 count *Permin Linen*.



Original sampler



Latest sampler

# Favoured Shades continued .....

**Area Four:** I worked this Stem Stitch over one thread (*as per the lower option of the stitch diagram*), leaving one thread between the two rows, thus making this area only three threads in height.

**Area Five:** I worked this Four-Sided Stitch over two threads as suggested, however, slightly pulled the stitch to give it a more delicate look.

Enjoy stitching your sampler! Sherelyn

Below are photos of both samplers - my original and my latest .....



~  
Original choice of fabric and threads -

Fabric:

Cashel Linen : 28 count : Platinum (#770)

Solid Thread Colours:

(DMC)

936 : 937 : 469 : 470 : 471 : 3348 : 472

~



~  
My latest choice of fabric and threads -

Fabric:

Permin Linen : 35 count : Lambswool (#135)

Solid Thread Colours:

(Soie d'Alger by Au Ver A Soie)

4625 : 4615 : 4635 : 4645 : 4634 : 4632

~

*MSG - Mystery Sampler Gathering - Stitch Day*

~

**VENUE:** Heirlooms • 1821 Pakowhai Road • RD 3 • Napier

**WHEN:** Sunday

**DATE:** 27 April 2014

**TIME:** 11am - 4pm \*

(\* *Visit at a time convenient for you ~ come when you can : leave when you must*)

**WHAT TO BRING:** Your Needlework project : Your lunch : Your smile

*A cup of tea or coffee will be available*

**No Reservation Required**

# Favoured Shades Sampler

Samples  
of  
thread shades



598 : 597 : 3766 : 807 : 3810 : 3809 :  
3808 : 3765 : 806 : 807



939 : 3750 : 930 : 931 : 932 : 3755 :  
3752 : 162 : 828



351 : 352 : 758 : 353 : 3856 : 950

Overdyed thread:  
Silk 'n Colors by *The Thread Gatherer*  
SNC 183 - Sushi Flower  
(or another alternative: Coral Shell)



939 : 823 : 336 : 311 : 312 : 322 :  
334 : 827 : 162



Original Sampler Thread Colours:  
937 : 936 : 469 : 470 : 471 : 3348 : 472



939 : 803 : 334 : 3755 : 3325 : 800 :  
3841 : 775



818 : 761 : 894 : 760 : 3833 : 3832 :  
3831 : 150

More samples of thread shades



355 : 356 : 3772 : 3064 : 3859 : 3771 : 754 : 3779  
3774 : 948 : 819 : 3713 : 152 : 3722 : 3721 : 221 : 3857



321 : 3721 : 315 : 3722 :  
223 : 224 : 225



154 : 3740 : 315 : 3727 : 778 : 225  
315 : 3740 : 3041 : 3042 : 3743 : 778 : 3713

Overdyed thread:

Silk 'n Colors by *The Thread Gatherer*  
SNC 171 - Cerise Noir



3348 : 3347 : 3346 : 3345 : 987 : 367 :  
320 : 988 : 989 : 368 : 164 : 369



340 : 155 : 791 : 792 : 793 : 3807 :  
3838 : 3839 : 341 : 3840

Overdyed threads:

Sampler Threads by *The Gentle Art*  
SAM 05 - Purple Iris  
SAM 05 - Sugar Plum



327 : 3734 : 3835 : 3041 : 3836 : 3743  
3740 : 3042 : 3743 : 153 : 316 : 3834 : 3835

Overdyed thread:

Sampler Threads by *The Gentle Art*  
SAM 05 - Hyacinth



38141 : 3813 : 503 : 3849 : 502 : 501 :  
3809 : 3808  
924 : 926 : 927 : 928

Overdyed thread:

Simply Shaker Sampler Threads  
by *The Gentle Art*  
SAM 05 - Uniform Blue  
(or another alternative: Brethren Blue)



550 : 552 : 3837 : 553 : 209 :  
210 : 554 : 3836 : 153 : 211

Overdyed thread:

Sampler Threads by *The Gentle Art*  
SAM 05 - Red Plum